

AURIS  
**GALLERIA**  
RETAIL AVENUE



LINK ROAD, MALAD (W)

CRAFTSMANSHIP OF PROSPERITY

A project by



Site Address: Off Link Road, Opp Landmark Restaurant, Kanchpada, Malad West, Mumbai, Maharashtra 400064  
Call 022 6105 4577 | [www.aurisserenity.com](http://www.aurisserenity.com)

The project has been registered via MahaRERA registration number: Tower 1 : P51800001080 | Tower 2 : P51800001413 | Tower 3 : P51800001082  
RERA no. for Galleria – P51800017171 and is available on the website <https://maharera.mahaonline.gov.in/> under registered projects



**Disclaimer:** The plans, specification, elevation, conceptual designs, visuals, images, dimensions, photograph, furniture, fixtures, amenities, facilities etc., are strictly provided for representation purpose only and are subject to requisite approvals from the competent authorities unless otherwise stated herein. This does not constitute an offer and/or contract of any nature between the company and the prospective purchaser/customers has independently satisfied himself before any conclusive decision. All brand names and trademarks stands reserved







Artist's impression



## DISCOVERY OF ENLIVENING THE JOY IN SHOPPING

Execute your gigantic dreams at Auris Galleria (Ground+4). Commendable facade and compelling design adds a style, creates a soothing aura bestowing an excellent and enjoyable shopping experience. Its spacious framework enables to conceptualize shop's setup, effortlessly and efficiently. With the profound knowledge of contemporary, this facility is designed much the same as the standards set globally. Crafted to unfurl a red carpet to international brands with an equal welcome for homegrown labels to flourish in its embrace. A neighbourhood where upper crust call their home, Auris Galleria will be a household name.



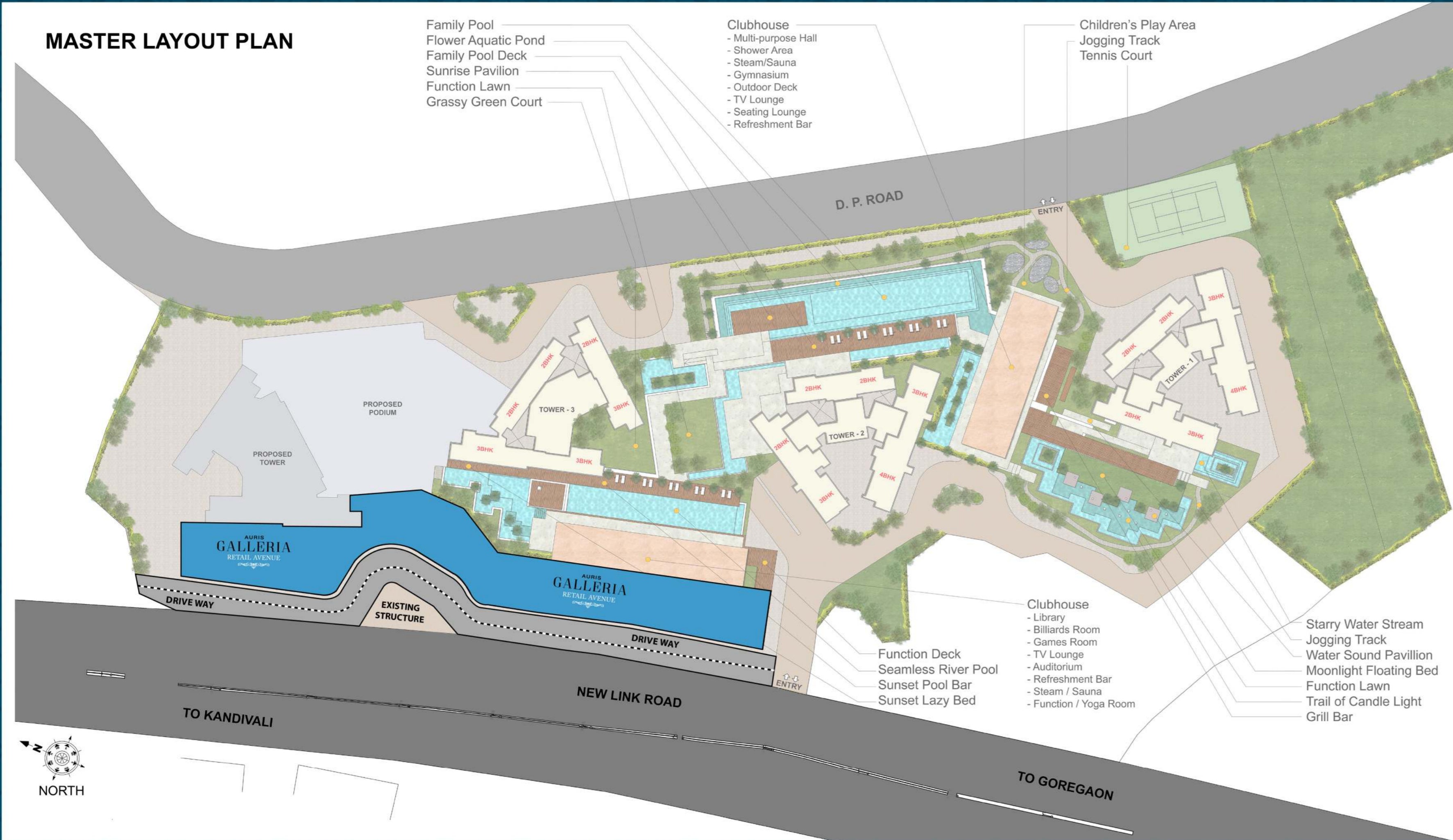
# PROSPERITY IS NOT A POSSIBILITY, IT'S INEVITABLE

Auris Galleria is a tomorrow that is being delivered today. It's an avant-garde idea forged with utmost perfection, while sparing some thought to the wide demands of businesses. Flanked by well-known malls, railway station, highway and residential projects, footfalls are expected to be in large numbers. Favourable locality, newfangled edifice and visionary forethought make Auris Galleria conducive to prosper.





# MASTER LAYOUT PLAN



- Family Pool
- Flower Aquatic Pond
- Family Pool Deck
- Sunrise Pavilion
- Function Lawn
- Grassy Green Court

- Clubhouse
  - Multi-purpose Hall
  - Shower Area
  - Steam/Sauna
  - Gymnasium
  - Outdoor Deck
  - TV Lounge
  - Seating Lounge
  - Refreshment Bar

- Children's Play Area
- Jogging Track
- Tennis Court

- Clubhouse
  - Library
  - Billiards Room
  - Games Room
  - TV Lounge
  - Auditorium
  - Refreshment Bar
  - Steam / Sauna
  - Function / Yoga Room

- Starry Water Stream
- Jogging Track
- Water Sound Pavillion
- Moonlight Floating Bed
- Function Lawn
- Trail of Candle Light
- Grill Bar



NORTH



Artist's impression

RERA REGISTRATION NO. TOWER 1: P51800001080 | TOWER 2: P51800001413 | TOWER 3: P51800001082 (Available at <https://maharera.mahaonline.gov.in>)







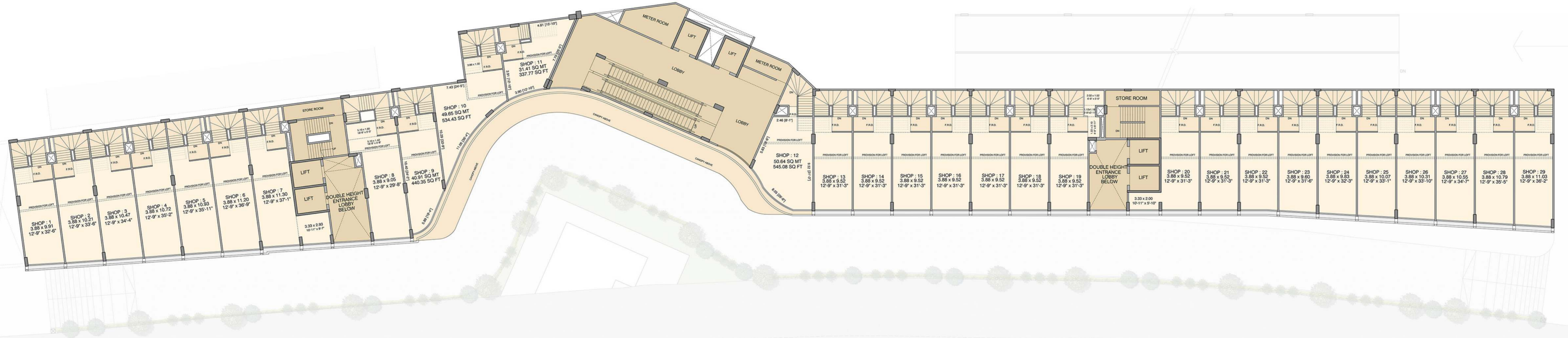
# AURIS GALLERIA GROUND FLOOR PLAN





# AURIS GALLERIA

## FIRST FLOOR PLAN





# AURIS GALLERIA

## TYPICAL 2<sup>nd</sup>, 3<sup>rd</sup> & 4<sup>th</sup> FLOOR PLAN



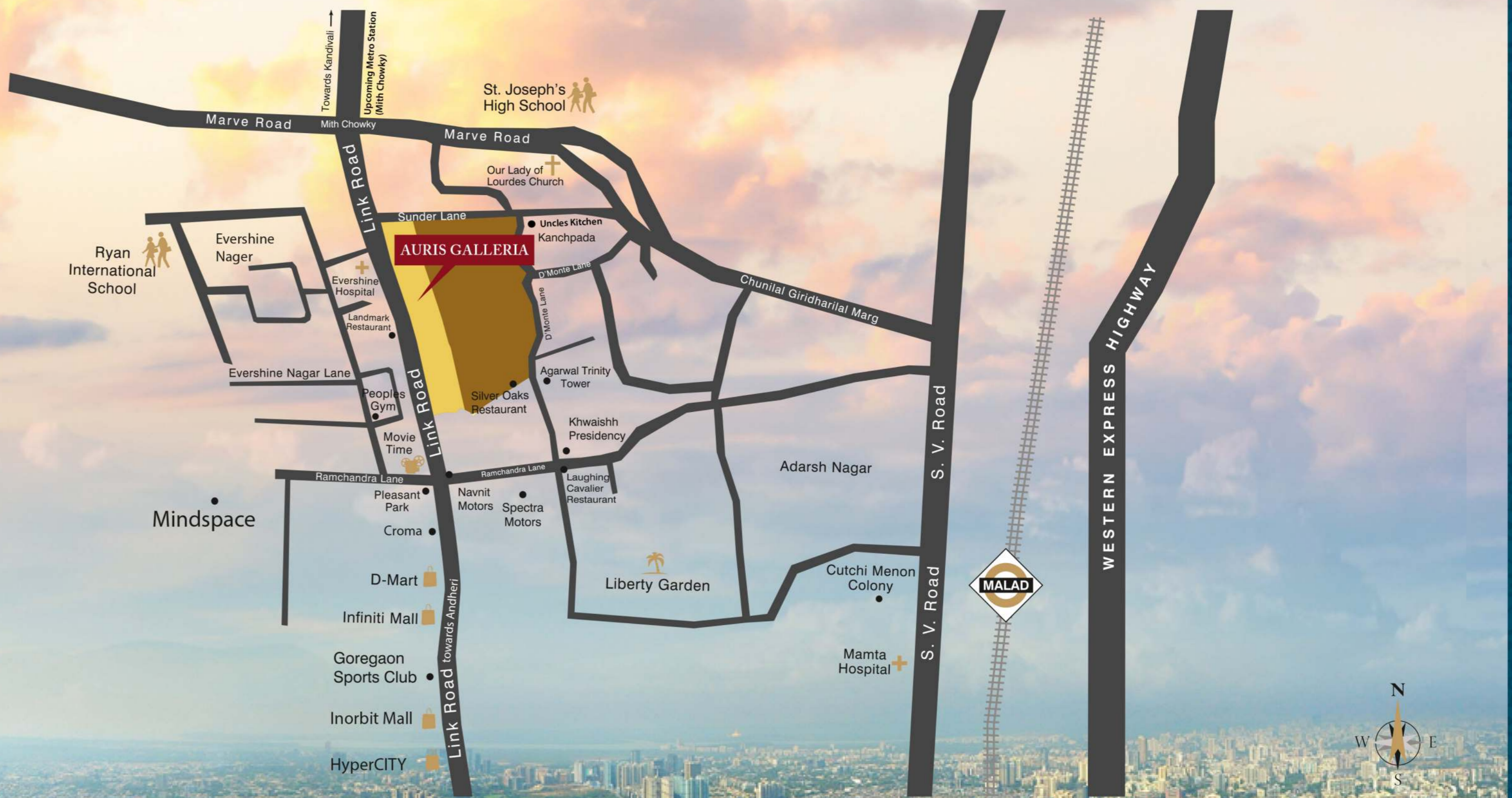


# GO PLACES, EFFORTLESSLY!

Auris Galleria makes its way to the whole city with its proximity to Link Road and Malad Railway Station. An influential project that will change the shopping sphere of city, due to its closeness to various well known shopping centers like Croma, Dmart, Inorbit & Infinity Mall. This shopping complex situated next to prominent places will make Malad the next ultimate shopping destination.

Upcoming Metro Station (Near Mith Chowky)	500 Mtrs
S.V Road	1 Km
Infinity Mall-Malad	1 Km
D Mart	1 Km
Goregaon Sports Club	1 Km
Malad Station	1.2 Km
Inorbit Mall	1.8 Km
HyperCity	2 Km
Western Express Highway	3 Km
Oberoi Mall	3.2 Km
Jogeshwari-Vikhroli Link Road	8 Km
Domestic Airport	13 Km
International Airport	15.1 Km

as per Google Maps



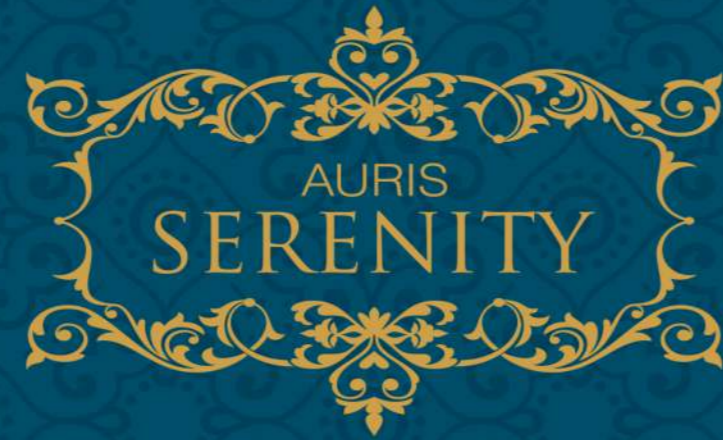


# LUXURY THAT'S TRULY EXCEPTIONAL

Auris Serenity has been conceptualized on the principles of an urban luxury retreat close to nature. Today, more than ever before, the New Age individual recognizes the need to find serene experiences within a rejuvenating ambience, and add back to his energies. This tranquil life is exemplified in every aspect at Auris Serenity. The project embraces spectacular luxury, an internationally styled contemporary lifestyle and path breaking innovations to enable high quality living which enables complete well being.



Actual Show Apartment



LINK ROAD, MALAD (W)

- 4 towers of 58 habitable floors each (4th tower proposed)
- Luxurious 2 , 3 & 4 bed apartments
- 30+ lifestyle amenities
- Sea view apartments
- 1st habitable floor at 98 ft. from ground level
- Eco-deck spread across 4 acres
- 7 level car parking for 3000+ cars
- 2 clubhouses (2 levels each)
- 2 large swimming pools
- Olympic size tennis court
- G+4 retail & office spaces (G+1 retail space & 2nd, 3rd, 4th level office spaces)
- Open layout with no negative spaces
- Secure gated community
- International architects & landscape consultants from Singapore



Actual Image



NIGHT VIEW



Artist's impression

SUCCESS IS  
THE OUTCOME  
OF GREAT  
PARTNERSHIPS



SHETH CREATORS  
Envisioning Landmarks

SHETH CREATORS

Sheth Creators is one of the leading and most prominent real estate companies in Maharashtra. Founded in 2011, Sheth Creators have conquered many benchmarks, bedecking the city skyline with landmarks. The company boasts of 20 million square feet residential, commercial and retail projects across India and abroad. With the motto of 'Envisioning Landmarks' as the guiding beacon, Sheth Creators is all set to move forward and herald an era of luxury the world has never seen before



Transcon  
Art of Transforming

TRANSCON

Our partner, Transcon Developers has been paving a way for itself to the top by launching consecutive architectural marvels in Mumbai. Since its inception in 2010, Transcon has showed a promising strength in planning and developing residential & commercial estates that are not only state-of-the-art but also future-ready.



